

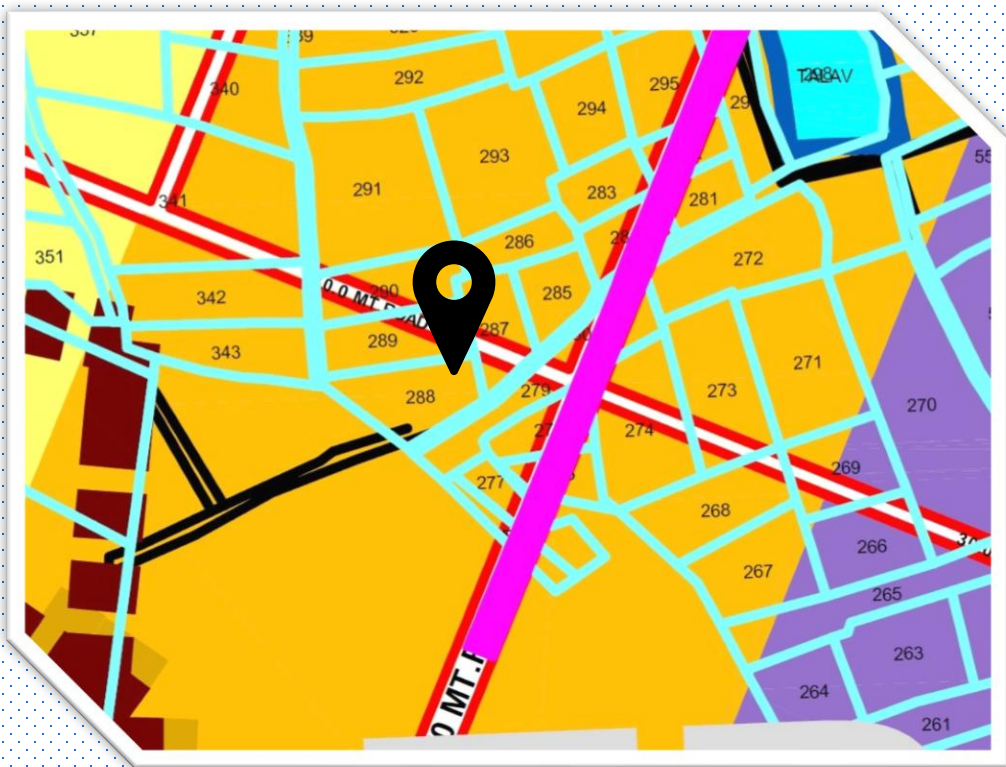


# HIGH ACCESS LAND PROPOSAL

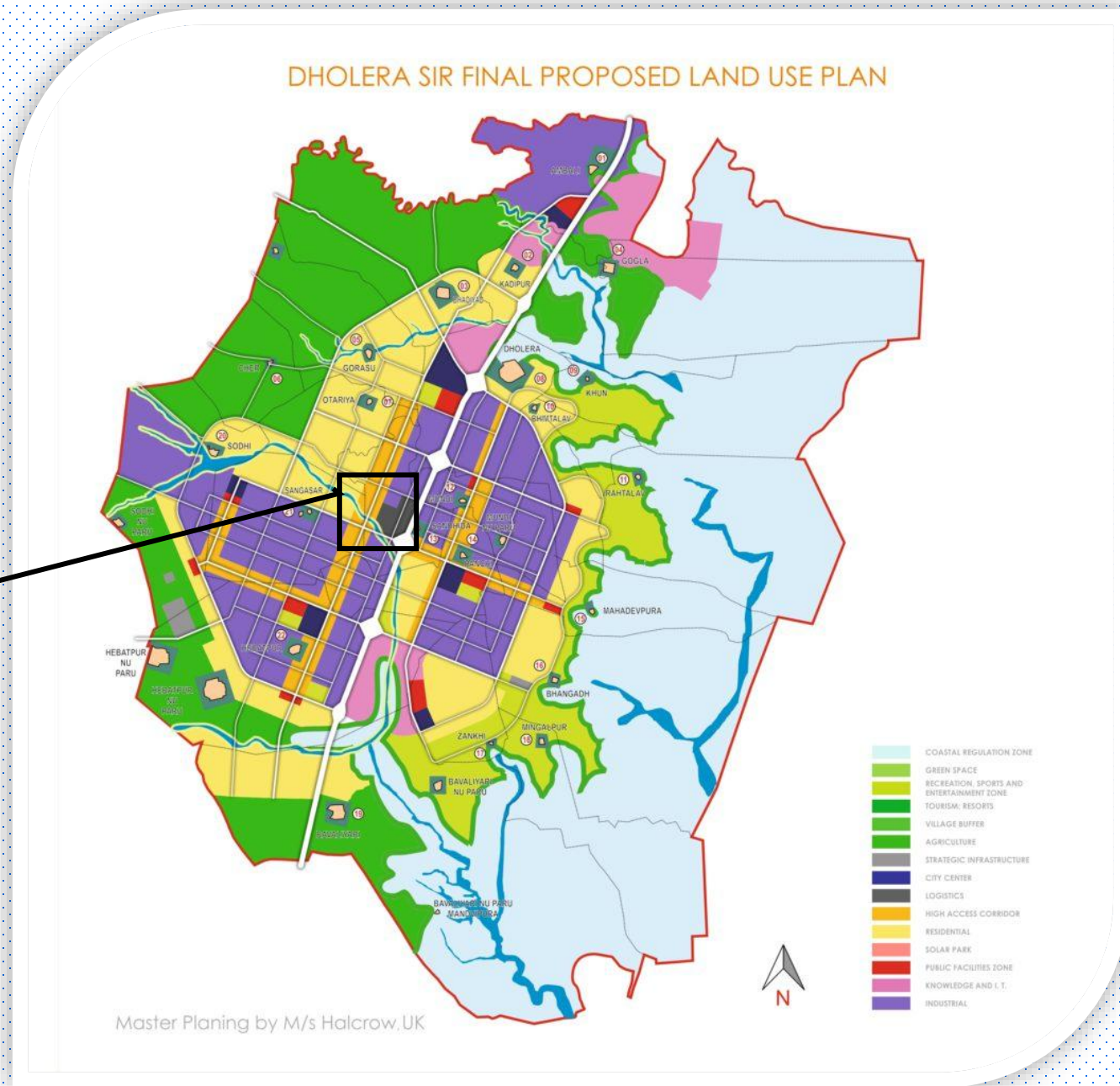
---

SURVEY NO 288  
VILLAGE - SANDHIDA

# PROPERTY LOCATION AND ZONE



HIGH ACCESS CORRIDOR





# SPECIAL FEATURES



ON DIRECT 48  
MTR ROAD,  
CONNECTING IT  
TO 250 MTR  
EXPRESSWAY.



SITUATED IN TP  
3C1, WHICH IS  
NEAR  
FINALISATION.



SITUATED  
CLOSE TO  
UPCOMING  
BHIMNATH-  
DHOLERA  
RAILWAY LINE.



HIGH ACCESS  
CORRIDOR ZONE  
MEANS WIDE  
RANGE OF  
OPTIONS FOR  
DEVELOPMENT.

THANK YOU!

---



**(M) 93131-91090**

**SEKSARIAGROUPINDIA@GMAIL.COM**